



SOMERSET COUNTY CONSERVANCY A Charitable Trust

www.somersetcountyconservancy.org

Newsletter

Fall , 2009

Walking Trail Dedication at Kimberly Run

The Somerset County Conservancy dedicated its nature trail to the memory of William and Elizabeth Piersol at their annual picnic on Sunday September 20th. Elizabeth was major benefactor of the Conservancy and its mission to provide for the permanent protection of land and its resources. The two mile walking trail is located on the Kimberly Run Natural Area grounds and is marked with white blazes and features two bridges over Kimberly Run. Kimberly Run Natural Area and the trail are open to the public 365 days a year. Please come out and enjoy a hike on the trail.

Inside this issue:

Web Site & In Memoriam	<i>page 2</i>
Lamberts Run	<i>Page 3</i>
Lamberts Run	<i>Page 4</i>
Conservation Easements & Picnic	<i>Page 6</i>
Membership Banquet	<i>Page 7</i>



Jeff Berkey
Josette Mickey
Joel Elder

Friends of the Piersols joined the Conservancy members for the dedication and hike.

The Presidents Corner

The Somerset County Conservancy has officially moved into the 21st century. No longer are we a member of the technologically challenged. We have a WEB SITE and E-mail. After long hours of discussions of how we could become more accessible we sought professional help. We contracted with Highland Communications Group in Somerset. Our web site is still being modified to better reflect our mission. Please explore our new site and let us know what you think. We want to continually update and expand this site so your input is critical.

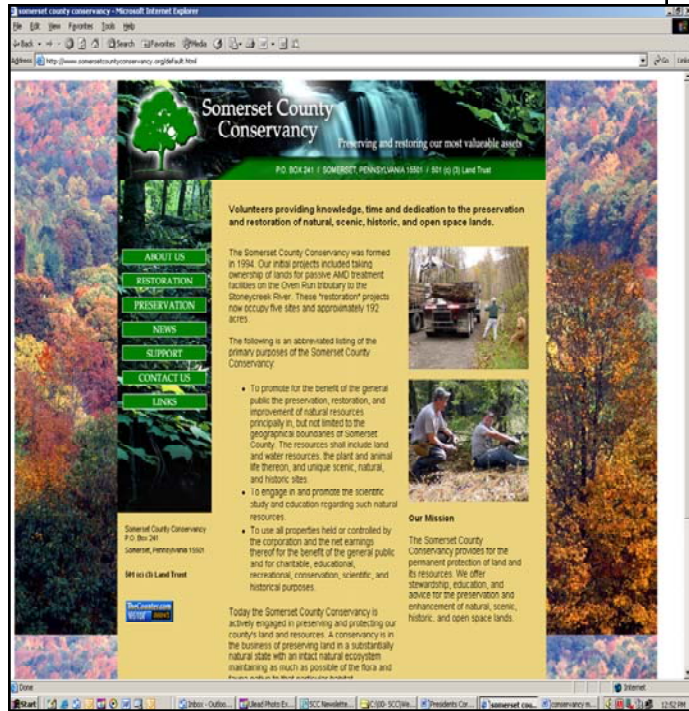
Our Web Site is:

www.somersetcountyconservancy.org

Our E-mail address is:

mail@somersetcountyconservancy.org

We look forward to hearing from you.



In Memoriam

It is with great sadness that we report on the passing of long time SCC member Cyndi Frankel. Cyndi and her husband Harvey have been members of the Conservancy since our founding. Cyndi's fighting spirit in her long time battle against cancer has been an inspiration to everyone who knew her. She will be sadly missed.

In Memoriam

It is with great sadness that we report on the passing of long time SCC member Charles Unsel. Chuck had been a believer in the Conservancy's mission for many years and a member since our founding. His passion for wood and wood carving, and his duties as the crier of Somerset County Courts were legendary. He will be sadly missed.

Donations in Memoriam

or

Charles Unsel

Cyndi Frankel

Roger & Cathy Latuch

Jeff & Retta Payne

Jim & Meg Moses

Rob & Brooke Mishler

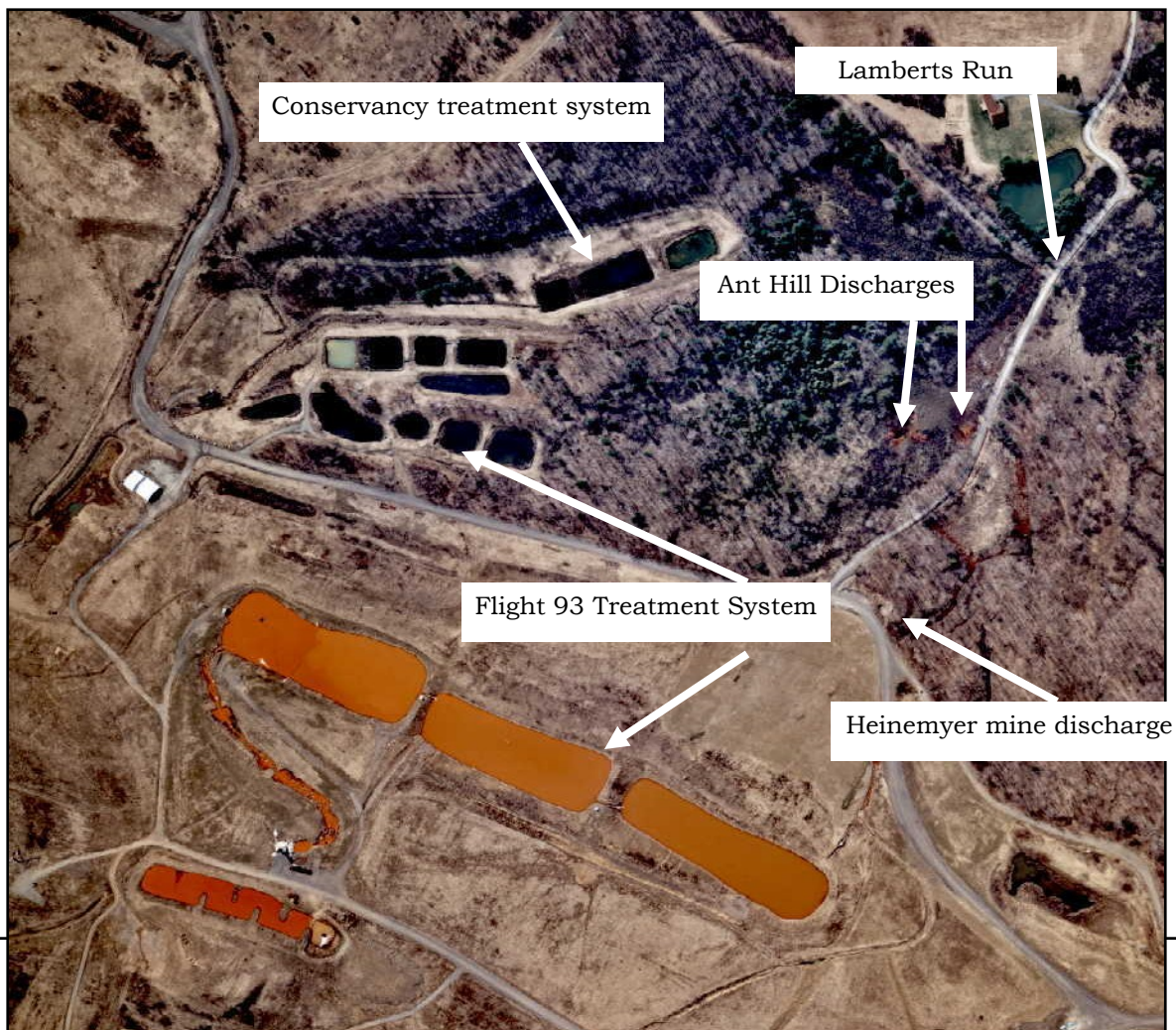
New Pollution Sources Identified on Lamberts Run

by Dan Seibert

A stream survey of Lamberts Run was conducted on July 9. Stream flow volume and water quality were measured at 8 locations from the mouth of the stream to the Heinemyer mine discharge located in the headwaters of the watershed. The stream study was conducted as a result of field observations by Conservancy members during the past winter and spring. Increased iron staining was noted on the stream bed at the mouth of the stream.

Richard Beam, Geologist from the DEP Bureau of Abandoned Mine Reclamation provided the stream flow measurement and the chemical testing. Brent Means from the Office of Surface Mining assisted with data analysis and interpretation. A total of 15 chemical parameters were measured along with stream flow volumes, which allowed the calculation of daily loading (pounds per day) of each pollutant. Since the iron staining on the stream bottom was a major concern, the analysis centered on the iron, acidity and alkalinity parameters.

No surprises were discovered at the known mine water discharges, the Heinemyer, Ant Hills and Flight 93. Sampling at these discharges did reveal an improvement in the pH and alkalinity in these waters, but iron continues to be a problem with the Heinemyer discharge which is producing 52 pounds of iron per day. The Ant Hill discharges continue to produce iron, but the wetland surrounding the discharge continues to treat and remove the iron before it reaches Lamberts Run



Lamberts Run continued

The Flight 93 discharge is being effectively treated during the summer. In the winter, lower temperatures appear to be reducing treatment effectiveness. Iron staining occurs at the outflow of the last treatment pond during the winter months.

An aggressive sampling project is scheduled for the Flight 93 treatment system this winter. Starting in October and continuing through May, the influent and effluent of each treatment pond will be sampled. The data gathered in this study will be used to design improvements to the treatment system so that all the iron is removed from the water all year long.

ADDITIONAL DISCHARGES LOCATED DOWNSTREAM

The Lamberts Run stream survey located sources of increasing iron concentrations in Lambertsville and below. A water well in Lambertsville with artesian flow is adding iron to the stream. Also, increased iron flow was discovered flowing from a wetland below Lambertsville.

Treatment of these discharges will be difficult. In the case of the artesian water well, a new water source for the family using the water for domestic use will have to be replaced with another water source. Treatment of the iron flowing from the wetland below Lambertsville will require the collection of the contaminated water and designing a treatment system to remove the iron. These discharges will require system components that add alkalinity because these discharges are acidic. The alkalinity must be added to create a chemical environment that will allow the iron to settle out before flowing into Lamberts Run.

Continued on page 5

Trail Clean-up day

WANTED

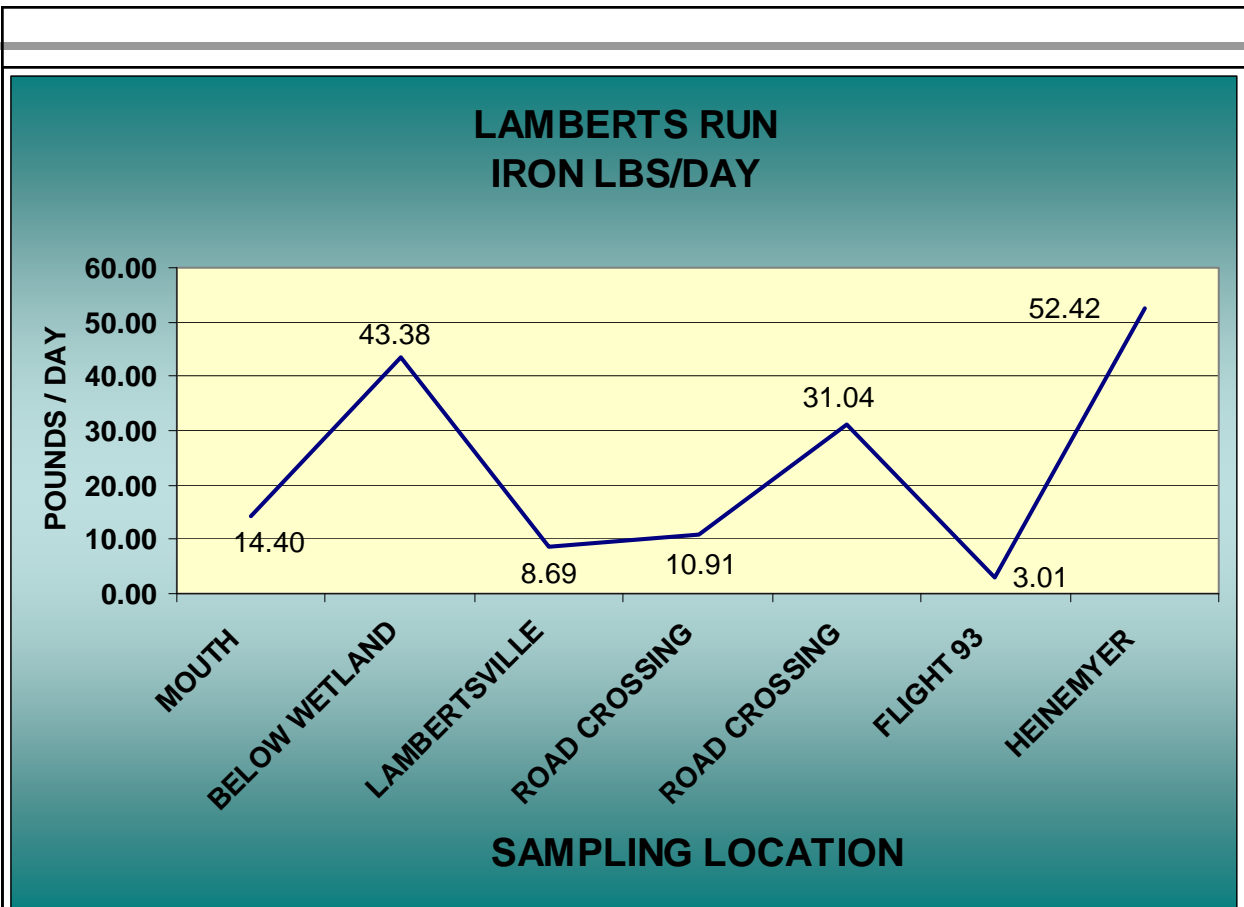
Work Party Volunteers

The SCC has work parties throughout the year to plant trees, make trails, do cleanups at our sites and other tasks. This is a great opportunity for members to get involved, meet the board members and others, and to do a good deed for the day. We always seem to have fun in one of our beautiful projects. Anyone interested in participating in one or more work parties during the year can contact us at:

mail@somersetcountyconservancy.org

To get on an e-mail list of upcoming work events.





Lamberts Run continued

The graph dramatically shows the increase in iron levels from the wetland below Lamberts-ville, where the iron load increases to 43 pounds per day. Also the effectiveness of the Flight 93 system during the summer is noted by the 3 pound per day loading. This number in-creases to an unacceptable number during the winter months.

WHATS NEXT

In late October an inter-disciplinary team will complete a detailed resource analysis of the discharge occurring in the wetland below Lamberts Run. The field visit will result in gathering all the resource data needed to evaluate and analyze the potentials for developing a treatment system. Land ownership, site access, utilities, water quality, soil resources, site topography, and land cover will be evaluated. It is hoped that from the data collected that an effective treatment system can be designed to treat this iron laden water.

CURRENT PROGRESS

Eric Robertson, PACD design engineer is providing design assistance for treatment of the Heinemyer discharge and the design for refurbishing the existing Conservancy treatment sys-tem. Eric is planning to have these designs completed by the end of January so they can be bid in February. Summer 2010 construction is planned for these two projects.

Conservation Easements

By Lester Brunell

This is the third article written on this subject since the June 2007 newsletter. The Somerset County Natural Heritage Inventory (SCNHI) provides us the most extensive guidance for our efforts to conserve our county's ecological resources. The SCNHI is a preliminary report on the best examples of living ecological resources in the county. To date, eighty items of ecological significance have been identified.

The county's ecological resources are classified in accordance with their rank and status globally, in the NatureServe area, in the USA, and in Pennsylvania. There are sixty seven counties in Pennsylvania; sixty six of them prepared natural heritage inventories. The Pennsylvania Natural Heritage Program (PNHP) is a member of NatureServe, the organization that coordinates natural heritage efforts in all fifty states, Canada, Latin America and the Caribbean.

We urge all our members to be alert for the opportunity to get suitable conservation easements for our conservancy. Whatever conservation efforts we are able to accomplish will be part of the world wide effort.

Our Annual Picnic

The Conservancy held its annual picnic at the Kimberly Run Natural Area pavilion on September 20, 2009.

On a beautiful fall day thirty six members and friends joined us for the picnic and walking / nature trail dedication. (See page one) After we enjoyed a covered dish meal including bison burgers on the grill, a short dedication ceremony was held with friends of William and Elizabeth Piersol speaking. Lester Brunell then led a hike along the newly marked walking trail.

A great time was had by all.



You are invited to
***The Annual Board of Directors
and
Membership Banquet***
Of
The Somerset County Conservancy

Wednesday, December 2, 2009

Cocktails at 6:30 pm Dinner at 7:00 pm

**Somerset Trust Company's Meeting
Room**

**The old building at the corner of N. Center Ave. & Union St.
Enter through the Union St. side door entrance (post office
side)**

**131 North Center Avenue
Somerset, PA 15501**

**Come and enjoy dinner under the dome
Catered by Chuck Wagon Restaurant**

**Entertainment: Fred Will presents:
*Barn Decorations of Somerset County***

\$20.00 per person at the door

Reservations required 814-445-4850 or

Email mail@somersetcountyconservancy.org

Somerset County Conservancy

Box 241

Somerset, PA 15501

HELP US SPREAD THE WORD!

Pass this newsletter on to a friend and ask them to join.

Enclosed is: \$ 15 Individual Member

\$ 25 Family Member

\$ 75 Sustaining Member

\$100 Patron, Club, Organization Member

\$750 Lifetime Member

EDITOR—

Jim Moses

Somerset Co. Conservancy

P.O. Box 241

Somerset, PA 15501

SEND ALL SUBMISSIONS FOR
FUTURE NEWSLETTERS TO

Jim Moses

Name: _____
Send To:

Address: _____
Somerset County Conservancy

City/State/Zip: _____
Box 241
Somerset, PA 15501

Phone: _____